



Wednesday, April 14, 2010

### Four Generation Pedigree

## EAGLES QTON SHINE LIS

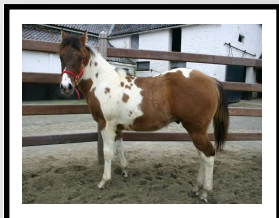
MARE - 971,275  
2009-RED DUN -TOBIANO  
Wednesday, June 10, 2009



Owner: H J ZOETELIEF/THE EAGLES RANCH  
1793 ER, TH

Breeder: A H M, VAN SCHAICK  
1188 JN, TH

Sire



### BEARS Q TON POCO

889,625  
2006-DUN -TOBIANO

### QTS CLEARCRYSTAL BEAR

581,987 2000-DUN -TOBIANO  
P-40.0

### BEAUTY ROCO BARS

757,516 2002-BLACK -TOBIANO

### Q T POCO STREKE

186,365 1990-BLACK -TOBIANO  
P-18.0

### MCBEAR CRYSTAL

196,689 1991-DUN -TOBIANO

### MAC SUMMER BAR

434,430 1998-BLACK -TOBIANO

### ISAURA HANK MACSHADOE

441,551 1998-BAY -TOBIANO

### PEPSI POCO

44,990 1976-BAY -TOBIANO

### BEAU W STREAKER

60,611 1981-BLACK -TOBIANO

### LITTLE BLACK BEAR

99,000 1984-BLACK -TOBIANO

### BARRYS HOLLY

(QH) 2,777,761 DUN

### SUMMER SILVER BAR

236,462 1993-BLACK -TOBIANO

### SPECKATANA BAR VF

274,327 1994-SORREL -TOBIANO

### HANK FULL OF CASH

227,021 1992-BAY -TOBIANO  
H-2.0 P-6.0

### SPECKLED MACSHADOE

179,919 1990-BLACK -TOBIANO

### SIRLETTE

(QH) 36,350 SORREL

### SHIRLEY NICK

(QH) 35,839 PALOMINO

### GRAND DECK

(QH) 456,865

### ORPHAN WASP

(QH) 170,630

### ALAMITOS BAR

(QH) 150,623 BAY

### MISS PAST DUE

(QH) 497,085

### TINKY LOUIE

(QH) 148,155

### LINDA'S ROCKET

(QH) 242,326

## OFFICIAL RECORDS OF THE AMERICAN PAINT HORSE ASSOCIATION

Dam



### SICILIAN ARIA

(QH) 2,707,178  
BAY

### SICILIAN SUNSHINE

(QH) 1,574,282 BAY

### SHE AINT WRONG

(QH) 1,700,000 SORREL

### SIR RALEIGH

(QH) 90,283 PALOMINO

### AGATHA GORDON

(QH) 1,260,351

### HES'WRIGHT

(QH) 1,028,221

### LADY LINDA LOU

(QH) 598,396